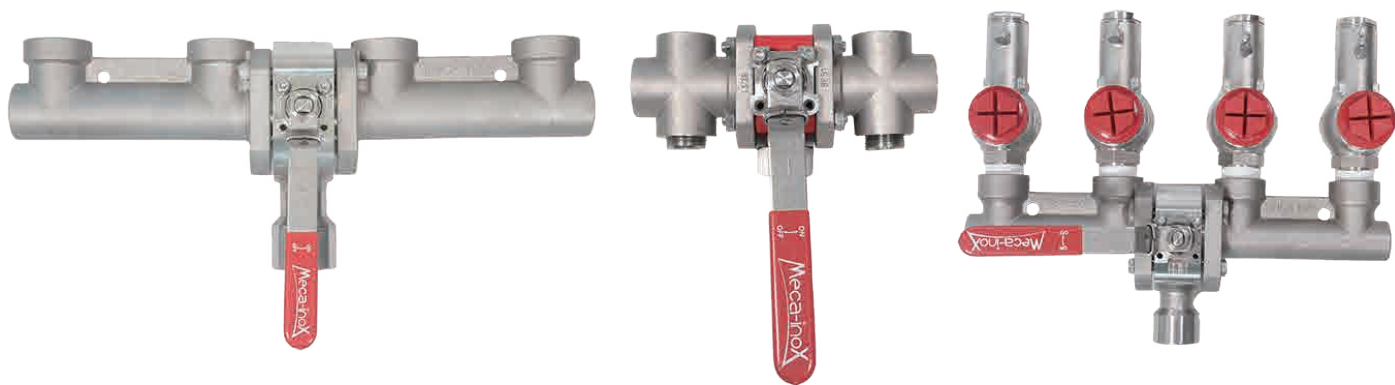


# 3-Way Diverter Valve



EN-2022

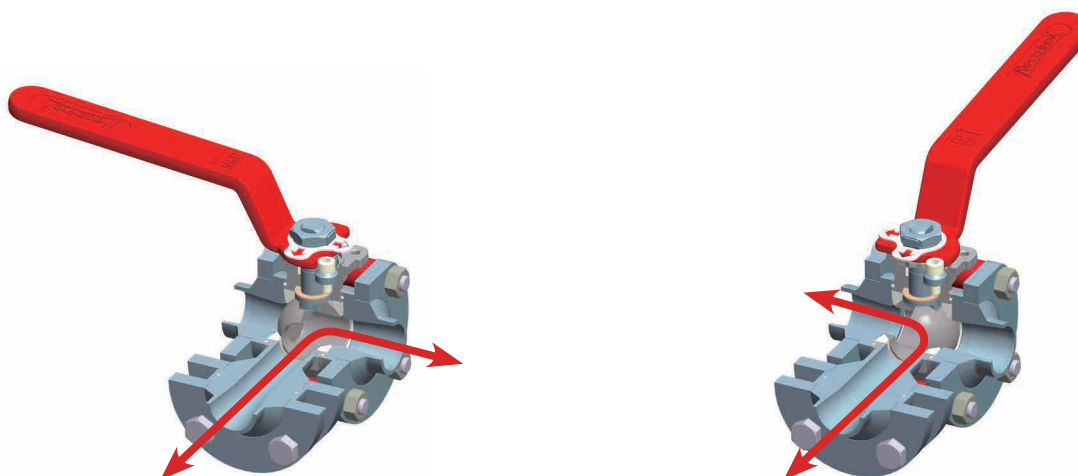
**Meca-inox**  
BALL VALVES

## 3-WAY

*3-way version / Horizontal inlet  
Full bore & reduced bore*

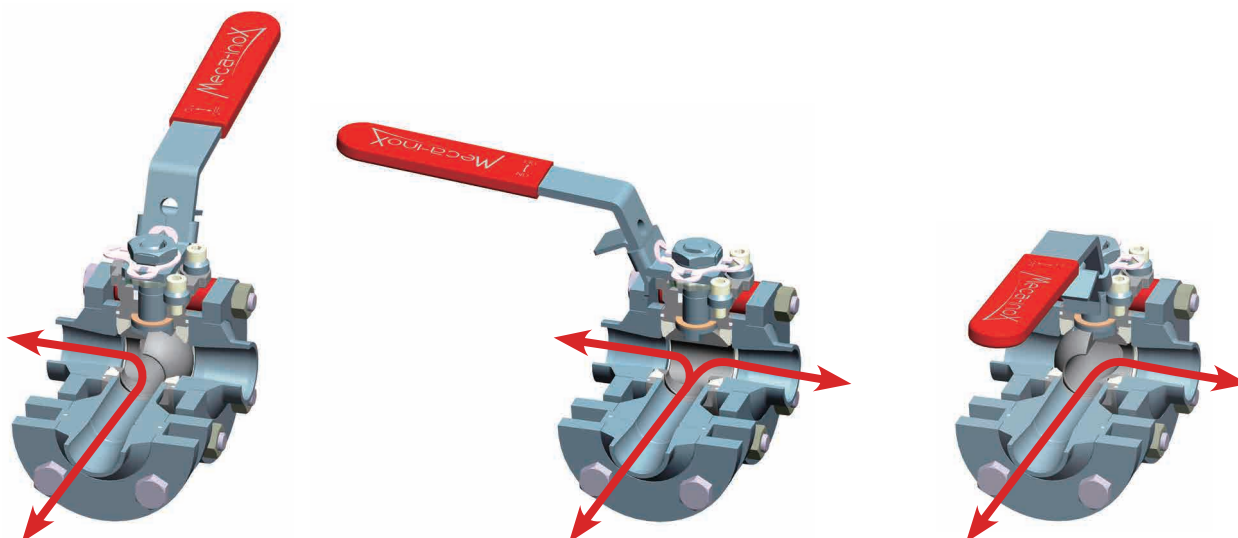
### 3VLH

*L port  
Diverting flow*



### 3VTH

*T port  
Diverting flow or mixing*



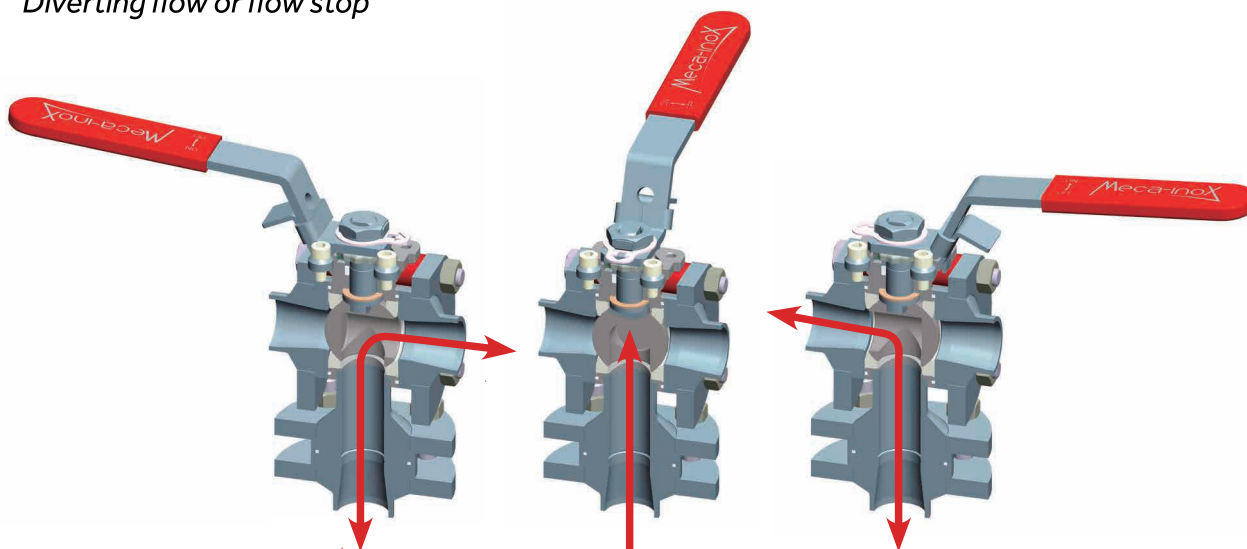
## 3-WAY

3-way version / Vertical inlet  
Full bore & reduced bore

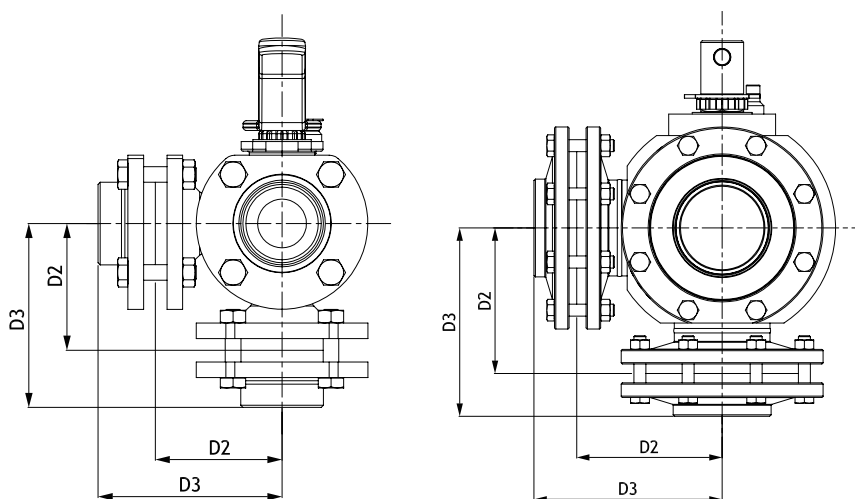
3VLV

L port

Diverting flow or flow stop



Horizontal & Vertical inlet size



尺寸 Size	08 1/4"	12 3/8"	15 1/2"	20 3/4"	25 1"	32 1 1/4"	40 1 1/2"	50 2"	65 2 1/2"	80 3"	100 4"
D2	45	45	50	60	65	72	80	103	135	149	170
D3	67.3	67.3	72.8	86.7	94.3	102.9	114.4	142.5	183	202	220

**Design Pressure:** PN100

**Inlet connection:** BW/SW/female thread...

**Outlet connection:** 1/2" FNPT \*4pcs

**Extra test connections:** 1/4" FNPT \*2pcs (with plug)

For the installation of two safety valves and two bursting discs.

Cleaned & degreased according to EN12300 for Oxygen,

Valves packed in closed individual plastic bag.

**Code: PS4LRACI015xxxx**

Available Options - on request only:

- Inlet connection: Customized type/ size/ direct welding.

- Outlet connection: Customized type/ size.

- Two extra test connections: Customized type/ size.

- Valve end connection is CF3M, the copper adaptor is needed when connect the SS inlet port safety valve.

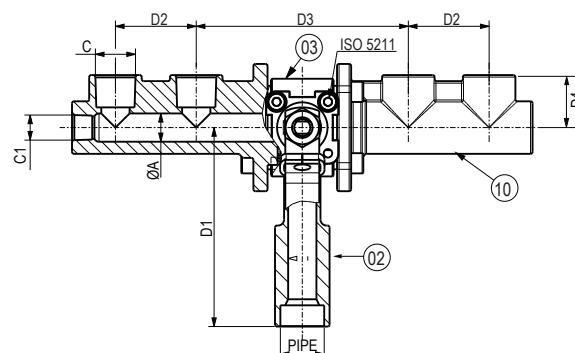
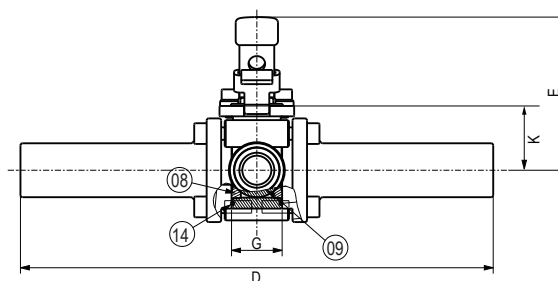
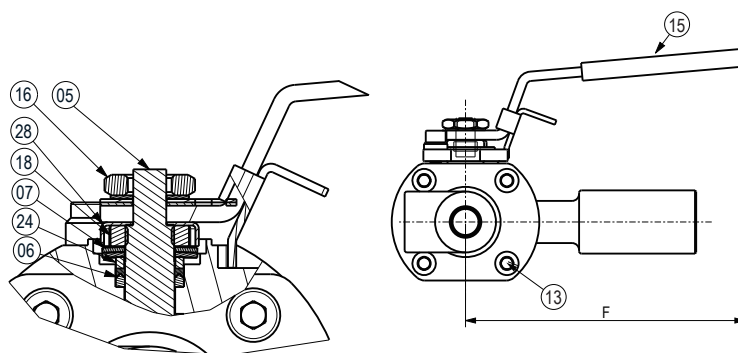
## Applications:

Approved for air gases, vapor and cryogenic liquefied gases.

Working temperature: -196°C up to +120°C.



Material		
Item	Description	Material EN
02	Port	1.4404/1.4409
03	Body	1.4404/1.4409
05	Stem	1.4404
06	Gland Packing	33%C+2%Gr PTFE
07	Spring washers	1.4310
08	Seat	TFM1600
09	Ball	1.4409
10	Ends	1.4409
13	Screw	1.4301
14	Body seal	PTFE
15	Lever	1.4301
16	Lever Nut	1.4404
18	Nut gland	1.4404
24	Gland	1.4404
28	Stop nut gland	1.4307



Technical Data			
Nominal Size	DN	15	
		3VTH	3VLH
Flow diameter	ØA	14	14
Inlet	PIPE	FNPT/SW/BW... (According to customer demand)	
Outlet1	C(FNPT)	1/2"	1/2"
Outlet2	C1(FNPT)	1/4"	1/4"
Face to Face dimension	D	228	228
Length	D1	98.5	98.5
Length	D2	40	40
Length	D3	105	105
Length	D4	26	26
Height	E	74	74
Length	F	120	120
Length	G	24.4	24.4
Height	K	31	31

**Design Pressure:** PN100

**Inlet connection:** BW/SW/female thread...

**Outlet connection:** 3/4" FNPT \*4pcs

**Extra test connections:** 1/4" FNPT \*2pcs (with plug)

For the installation of two safety valves and two bursting discs.

Cleaned & degreased according to EN12300 for Oxygen,

Valves packed in closed individual plastic bag.

**Code: PS4LRACI020xxxx**

Available Options - on request only:

- "L" type ball\_3VLH
- Inlet connection: Customized type/ size/ direct welding.
- Outlet connection: Customized type/ size.
- Two extra test connections: Customized type/ size.
- Valve end connection is CF3M, the copper adaptor is needed when connect the SS inlet port safety valve.

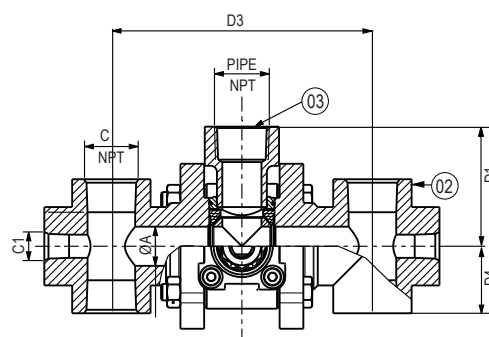
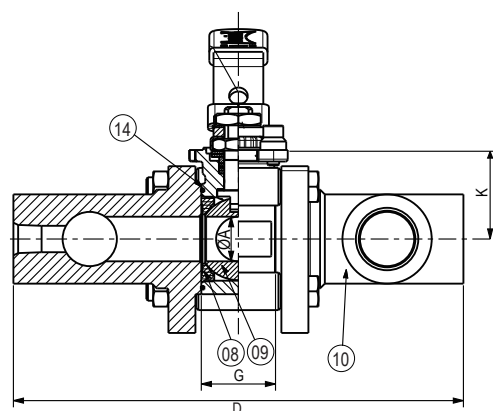
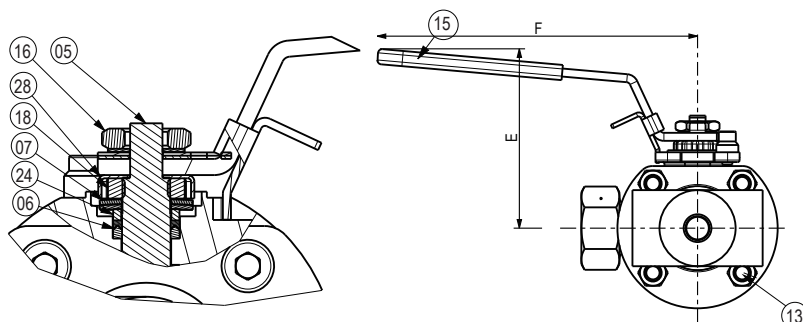
## Applications:

Approved for air gases, vapor and cryogenic liquefied gases.

Working temperature: -196°C up to +120°C.



Material		
Item	Description	Material EN
02	Port	1.4404/1.4409
03	Body	1.4404/1.4409
05	Stem	1.4404
06	Gland Packing	33%C+2%Gr PTFE
07	Spring washers	1.4310
08	Seat	TFM1600
09	Ball	1.4409
10	Ends	1.4409
13	Screw	1.4301
14	Body seal	PTFE
15	Lever	1.4301
16	Lever Nut	1.4404
18	Nut gland	1.4404
24	Gland	1.4404
28	Stop nut gland	1.4307



Technical Data			
Nominal Size	DN	20	
	BALL	3VTH	3VLH
Flow diameter	ØA	19	19
Inlet	PIPE	¾" NPT	¾" NPT
Outlet1	C(FNPT)	¾" NPT	¾" NPT
Outlet2	C1(FNPT)	¼" NPT	¼" NPT
Face to Face dimension	D	191.6	191.6
Length	D1	58	58
Length	D3	58	58
Length	D4	35	35
Height	E	90	90
Length	F	160	160
Length	G	31.6	31.6
Height	K	38	38



**Design Pressure:** PN70/50

**Inlet connection:** BW/SW/female thread...

**Outlet connection:** 1/2", 3/4", 1", 1 1/4", 1 1/2" FNPT \*4pcs

**Extra test connections:** 1/4" FNPT \*2pcs (with plug)

For the installation of two safety valves and two bursting discs.  
Cleaned & degreased according to EN12300 for Oxygen,  
Valves packed in closed individual plastic bag,

**Code: MS4LRACI025/032/040xxxx**

Available Options - on request only:

- Inlet connection: Customized type/ size/ direct welding.
- Outlet connection: Customized type/ size.
- Two extra test connections: Customized type/ size.
- Valve end connection is CF3M, the copper adaptor is needed when connect the SS inlet port safety valve.

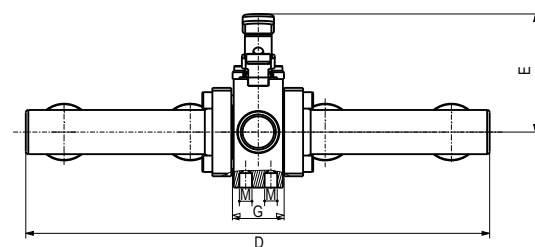
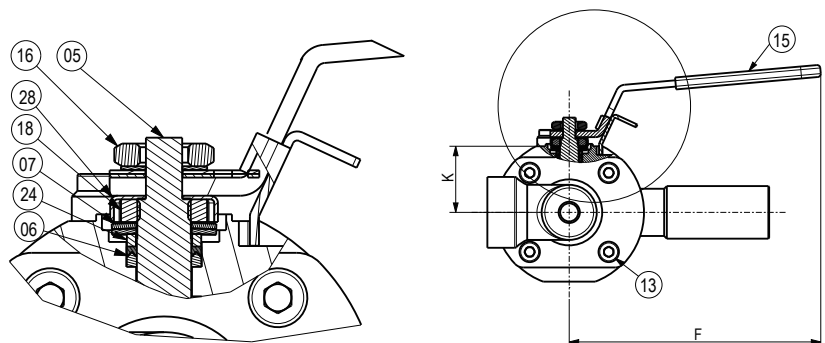
## Applications:

Approved for air gases, vapor and cryogenic liquefied gases.

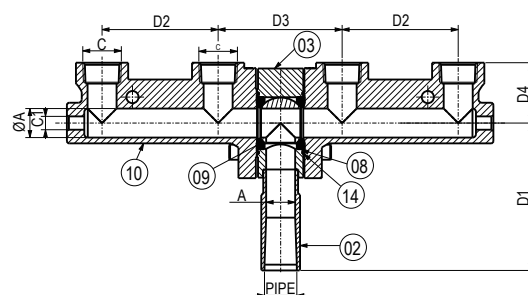
Working temperature: -196°C up to +120°C.



Material		
Item	Description	Material EN
02	Port	1.4404/1.4409
03	Body	1.4404/1.4409
05	Stem	1.4404
06	Gland Packing	Graphite
07	Spring washers	1.4310
08	Seat	TFM1600
09	Ball	1.4409
10	Ends	1.4409
13	Screw	1.4301
14	Body seal	Graphite
15	Lever	1.4301
16	Lever Nut	1.4404
18	Nut gland	1.4404
24	Gland	1.4404
28	Stop nut gland	1.4307



F-Style	Technical Data						
Nominal Size	DN	25		32		40	
	PN	70		50		50	
		3VTH	3VLH	3VTH	3VLH	3VTH	3VLH
Flow diameter	ØA	25	25	32	32	38	38
Inlet	PIPE	FNPT/SW/BW... (According to customer demand)					
Outlet1	C(FNPT)	½" / ¾" / 1"	½" / ¾" / 1"	Customized		¾" / 1" / 1½"	¾" / 1" / 1½"
Outlet2	C1(FNPT)	¼"	¼"			¼"	¼"
Face to Face dimension	D	337	337			528	528
Length	D1	127	127			145	145
Length	D2	100	100			150	150
Length	D3	107	107			150	150
Length	D4	52	52			65	65
Height	E	94	94			115	115
Length	F	160	160			190	190
Length	G	42	42			56	56
Fixing holes	M	M10	M10	M10	M10		
Height	K	42	42				



**Design Pressure:** PN70/50

**Inlet connection:** BW/SW/female thread...

**Outlet connection:** ½", ¾", 1", 1¼", 1½" FNPT \*2pcs

**Extra test connections:** 1/4" FNPT \*2pcs (with plug)

For the installation of two safety valves and two bursting discs.

Cleaned & degreased according to EN12300 for Oxygen,

Valves packed in closed individual plastic bag.

**Code: MS4LRACI025/032/040xxxx**

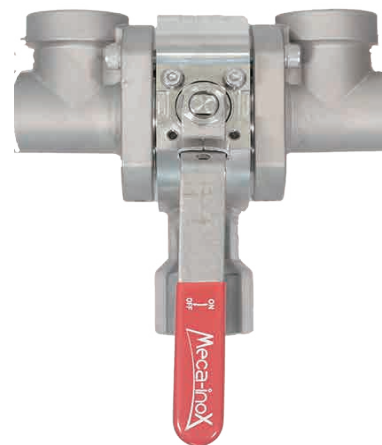
Available Options - on request only:

- Inlet connection: Customized type/ size/ direct welding.
- Outlet connection: Customized type/ size.
- Two extra test connections: Customized type/ size.
- Valve end connection is CF3M, the copper adaptor is needed when connect the SS inlet port safety valve.

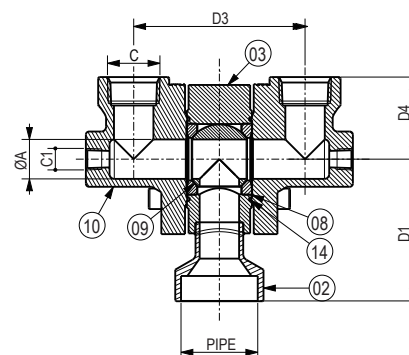
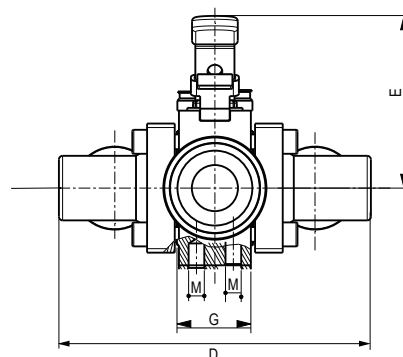
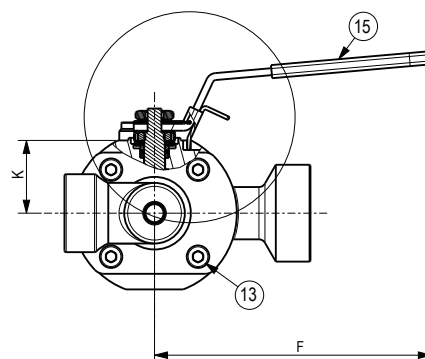
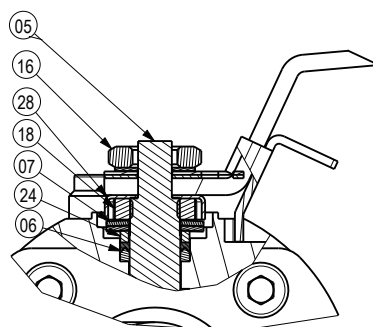
## Applications:

Approved for air gases, vapor and cryogenic liquefied gases.

Working temperature: -196°C up to +120°C.



Material		
Item	Description	Material EN
02	Port	1.4404/1.4409
03	Body	1.4404/1.4409
05	Stem	1.4404
06	Gland Packing	Graphite
07	Spring washers	1.4310
08	Seat	TFM1600
09	Ball	1.4409
10	Ends	1.4409
13	Screw	1.4301
14	Body seal	PTFE/Graphite
15	Lever	1.4301
16	Lever Nut	1.4404
18	Nut gland	1.4404
24	Gland	1.4404
28	Stop nut gland	1.4307



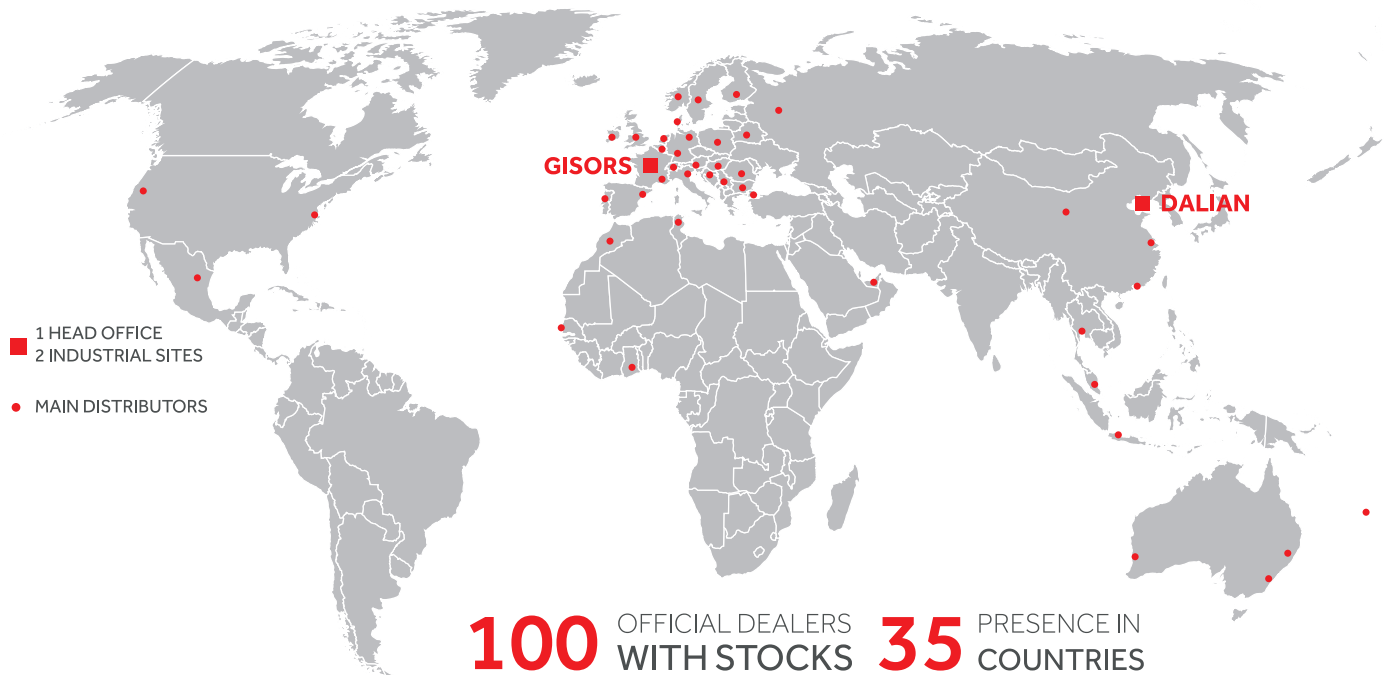
L-Style	Technical Data						
Nominal Size	DN	25		32		40	
	PN	70		50		50	
	BALL	3VTH	3VLH	3VTH	3VLH	3VTH	3VLH
Flow diameter	ΦA	25	25	32	32	40	40
Inlet	PIPE	FNPT/SW/BW...(According to customer demand)					
Outlet1	C(FNPT)	½"/¾"/1"	½"/¾"/1"	Customized		¾"/1"/1½"	¾"/1"/1½"
Outlet2	C1(FNPT)	1/4"	1/4"			1/4"	1/4"
Face to Face dimension	D	169	169			262	262
Length	D1	127	127			145	145
Length	D3	108.5	108.5			150	150
Length	D4	52	52			65	65
Height	E	93	93			115	115
Length	F	160	160			190	190
Length	G	42	42			56	56
Fixing hole	M	M10	M10			M10	M10
Height	K	42	42			59	59

# Meca-inox

## BALL VALVES

HIGH QUALITY BALL VALVES

BORN IN FRANCE, WORLDWIDE AVAILABLE



Since 1967, MECA-INOX has manufactured ball valves and is a European leading signature for high quality ball valves dedicated to Chemistry, Pharma & Cosmetic, Cryogenic fluids, Food & Beverage and Industry with more than 3 million valves installed all over the world and 150 000 ball valves yearly production.

Expert in stainless steel and carbon steel ball valves technology, we have developed over the years a complete products offer internationally recognized for its reliability, performance, and flexibility of use. Combining high quality materials and our specific knowhow of design and manufacturing, our products meet the most stringent requirements.

From our industrial sites of Gisors (France) and Dalian (China), our teams can support you anywhere in the world. Our network of distributors provide an optimal availability of our valves and equipment for your international projects.

[meca-inox.com.cn](http://meca-inox.com.cn)

### MECA-INOX CHINA

18# Building, Jingang Industrial Park, Dalian E & T  
Development Zone 116600, CHINA

T: (86) 0411-87549209

E-mail: [info@meca-inox.com.cn](mailto:info@meca-inox.com.cn)

[meca-inox.com.cn](http://meca-inox.com.cn)



A BRAND OF GROUP

**Meca-inox**  
SINCE 1955



Material		
Item	Description	Material EN
02	Port	1.4404/1.4409
03	Body	1.4404/1.4409
05	Stem	1.4404
06	Gland Packing	Graphite
07	Spring washers	1.4310
08	Seat	TFM1600
09	Ball	1.4409
10	Ends	1.4409
13	Screw	1.4301
14	Body seal	PTFE/Graphite
15	Lever	1.4301
16	Lever Nut	1.4404
18	Nut gland	1.4404
24	Gland	1.4404
28	Stop nut gland	1.4307